



## Bolham Primary School-Pupil Catch Up Premium 2020/2021 Academic Year

### Funding allocation (Mainstream Schools)

Schools' allocations will be calculated on a per pupil basis, providing each mainstream school with a total of £80 for each pupil in years' reception through to 11.

### Payments

This funding will be provided in 3 tranches. The government will provide schools with an initial part payment in autumn 2020, based on the latest available data on pupils. A second grant payment will be made in early 2021, based on updated pupil and place data. For mainstream schools, the 4 to 15 pupil headcount from the October 2020 census will be used to determine funding. The second grant payment will also take account of the initial part payment made in autumn 2020 so that schools will receive a total of £46.67 per pupil. A further £33.33 per pupil will be paid during the summer term 2021. Though funding has been calculated on a per pupil basis, schools should use the sum available to them as a single total from which to prioritise support for pupils according to their need. As the catch-up premium has been designed to mitigate the effects of the unique disruption caused by coronavirus (COVID-19), the grant will only be available for the 2020 to 2021 academic year. It will not be added to schools' baselines in calculating future years' funding allocations.

### Use of funds

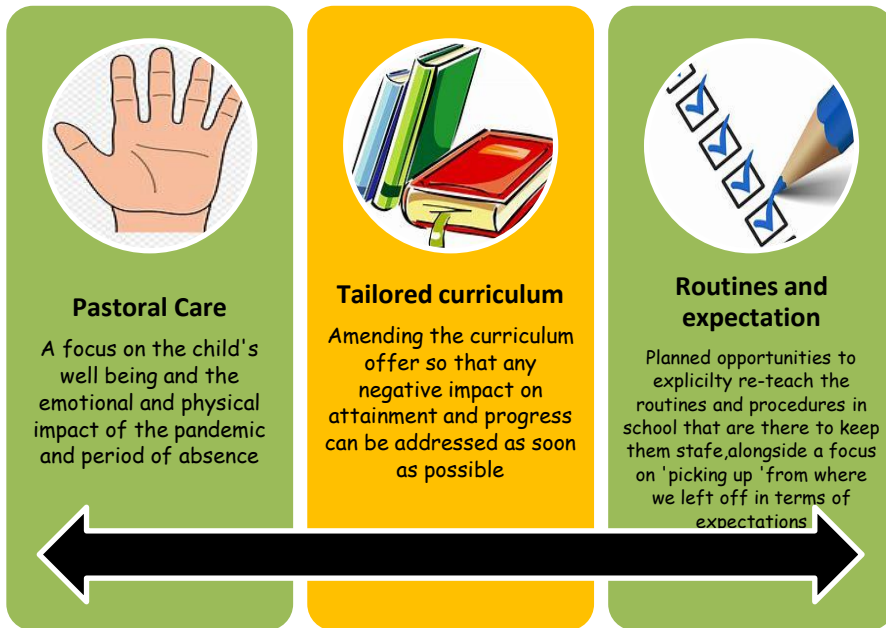
Schools should use this funding for specific activities to support their pupils to catch up for lost teaching over the previous months, in line with the guidance on curriculum expectations for the next academic year. Schools have the flexibility to spend their funding in the best way for their cohort and circumstances.

### Accountability and monitoring

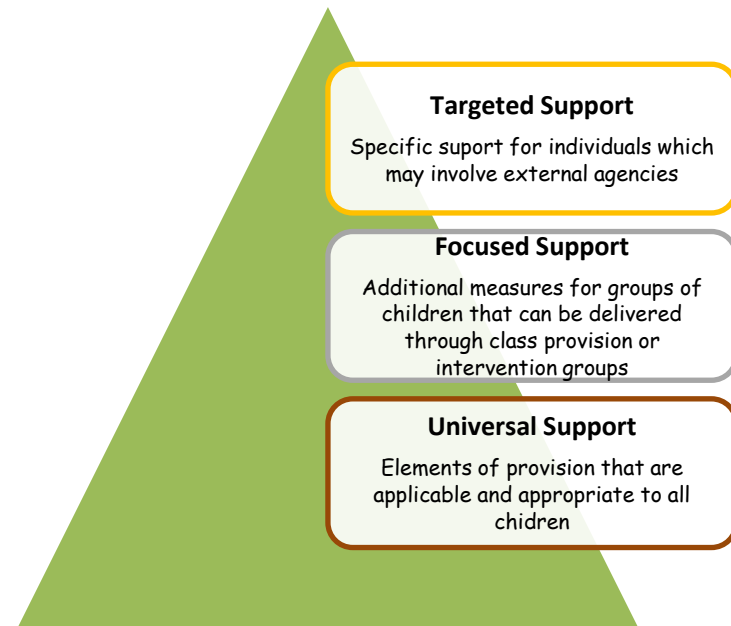
As with all government funding, school leaders must be able to account for how this money is being used to achieve our central goal of schools getting back on track and teaching a normal curriculum as quickly as possible. Given their role in ensuring schools spend funding appropriately and in holding schools to account for educational performance, governors and trustees should scrutinise schools' approaches to catch-up from September, including their plans for and use of catch-up funding. This should include consideration of whether schools are spending this funding in line with their catch-up priorities, and ensuring appropriate transparency for parents.

Bolham Primary School Pupil Catch Up Premium Plan for 2020-21 outlines the way forward in ensuring that resources are effectively targeted to help ensure that standards of attainment and outcomes for all pupils are in line with or above national outcomes 2021, relationship and values are quickly re-established and that pupils mental and physical health is well supported. Our recovery approach will be split into three strands and levels of support will be implemented in a tiered approach.

**Strands:**



**Tiered approach:**



<b>Number of pupils and grant received</b>	
Total number of pupils on roll	114
<b>Total amount of premium received 2020/2021 (£)</b>	<b>£9,120</b>

### Summary of Pupil Catch Up Premium spending 2020/21

#### Barriers to future attainment and progress

A	Further lockdown, poor attendance, staff absence or collapse of teaching bubbles may lead to further periods out of school for pupils
B	Pupil access to reading materials during summer term and holiday period may have been limited and reading ages and phonemic knowledge may be lower than expected at the beginning of Autumn Term and long term could affect attainment and progress
C	The gap between SEN pupils and non - SEN pupils may continue to widen
D	Adverse lockdown experiences could severely affect educational outcomes for some pupils.

#### Desired Outcomes

<i>Desired outcomes and how they will be measured</i>		<i>Success criteria</i>
A	Pupils will have access to a strong remote learning provision in the event of further lockdown	Pupils will continue to make good progress in reading, writing and maths from their post lockdown September 2020 baseline assessment and be at or above age related expectations July 2021
B	Pupils will have access to appropriate and motivating reading resources and re-engage with their reading and phonics	Accelerated reading scores show progress from post lockdown assessment levels Percentage of Year 2 and Year 1 pupils passing their phonics test is in line with or above national outcomes 2021
C	The gap between SEN pupils and non -SEN pupils is narrowed	Percentage of SEN pupils achieving age related expectations in line with national SEN outcomes and SEN pupils make progress from post lockdown assessment baseline
D	Pupils are well supported emotionally and physically	Pupils are provided with individual support where required to make good progress from their baseline assessment and to have the strategies needed to address emotional or physical difficulties

**Planned Expenditure 2020/21**

Barrier	Action	What is the evidence and rationale for this choice?	Intended outcome and success criteria	Person responsible	Impact/evaluation
A	<ul style="list-style-type: none"> <li>Secure pupil access to Microsoft Teams</li> <li>Develop staff knowledge and understanding of teaching via Teams and best practice</li> <li>Increase computing time early in Autumn Term to prepare pupils for the switch to online learning</li> <li>Create Home School Guides to Teams remote learning</li> <li>Provide online homework for pupils to increase pupil confidence and skills</li> </ul>	<p>Lockdown evidence - Summer Term 2020</p> <p>Effective parental support and engagement ensures better learning outcomes for pupils</p>	<p>Pupils will continue to make good progress in reading, writing and maths from their post lockdown September 2020 baseline assessment and be at or above age related expectations July 2021</p>	DW/CB-computing lead	<p>December 2020 - first tracking point</p> <p>March 2021 second tracking point</p> <p>July 2021 - third tracking point</p>
Total Budgeted cost					£500

Barrier	Action	What is the evidence and rationale for this choice?	Intended outcome and success criteria	Person responsible	Impact/evaluation
B	<ul style="list-style-type: none"> <li>Introduction of whole school use of Accelerated Reader</li> <li>Change of library coding system</li> <li>Staff training in use of AR</li> <li>Pupil training in use of AR system</li> <li>Phonics assessment - September 2020 to identify pupil in need of further targeted support</li> </ul>	<p>Lockdown evidence - Summer Term 2020</p> <p>English Lead Action Plan Spring 2020</p>	<p>Accelerated reading scores show progress from post lockdown assessment levels</p> <p>Percentage of Year 2 and Year 1 pupils passing their phonics test is in line with or above national outcomes 2021</p>	JH- English Lead	<p>December 2020 - first tracking point</p> <p>March 2021 -second tracking point</p> <p>July 2021 - third tracking point</p>
Total Budgeted cost					£ 500

Barrier	Action	What is the evidence and rationale for this choice?	Intended outcome and success criteria	Person responsible	Impact/evaluation
C	<ul style="list-style-type: none"> <li>Each class to have a full time learning support assistant to support 1:1 or group learning where required</li> <li>Dedicated SEN learning assistant time each week to work with individual pupils</li> <li>Classroom intervention timetables for identified pupils</li> <li>Increased teacher provision for identified cohorts at KS2</li> </ul>	SEN assessment data in reading and maths - September and October 2020	Percentage of SEN pupils achieving age related expectations in line with national SEN outcomes and SEN pupils make progress from post lockdown assessment baseline	DW/ SR - SENDCo	December 2020 - first tracking point  March 2021 -second tracking point  July 2021 - third tracking point
			Total Budgeted cost		£6,120

Barrier	Action	What is the evidence and rationale for this choice?	Intended outcome and success criteria	Person responsible	Impact/evaluation
D	<ul style="list-style-type: none"> <li>Introduce whole school PSHE Jigsaw support package -to promote emotional health and well- being of all pupils</li> <li>Create listening culture through use of 'I wish my teacher knew 'boxes in classes 2,3 and 4</li> <li>Increase sport provision through the week to support return to pre lockdown levels of fitness</li> </ul>	PSHE review -Spring Term 2020  Teacher observations - September 2020  Teacher assessment - September 2020	Pupils are provided with individual support where required to make good progress from their baseline assessment and to have the strategies needed to address emotional or physical difficulties	DW	December 2020 - first tracking point  March 2021 -second tracking point  July 2021 -third tracking point
			Total Budgeted cost		£2000

